

### 7.1.7. Disabled Friendly, Barrier Free environment in the campus

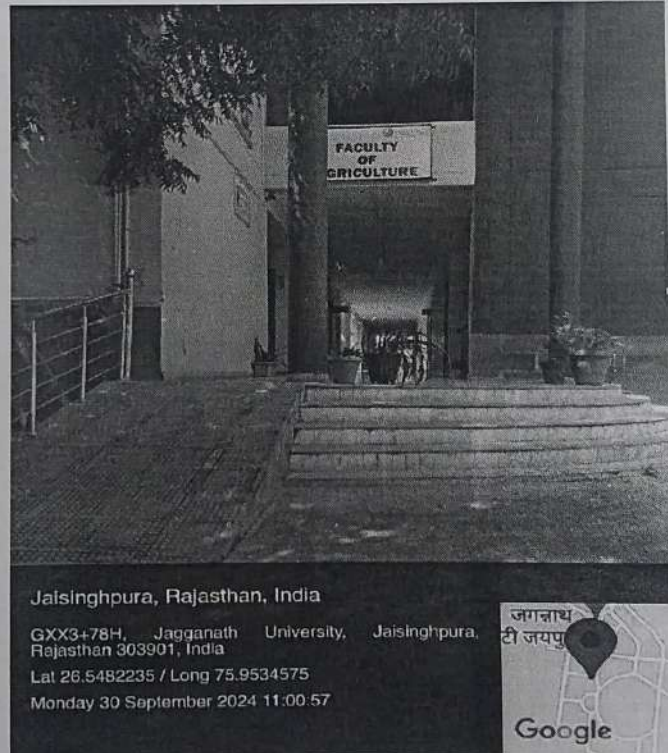
Jagannath University aims to provide an inclusive education framework for all and so strives to create a barrier free and differently abled (divyangjan) friendly environment in our campus. Lifts, ramps, special toilets/bathrooms as well as specific facilities are provided all over the campus wherever required. A special reading hall for differently-able students, Braille books and assistive software (screen reading) and other equipment are available in the Knowledge Resource Centre. Scribes and additional time are provided at the time of examination as per norms. Divyangjan-friendly wheelchairs, vehicles and equipment are provided to employees/students as per their requirement.

Types of facilities

- 1 Ramps facility
- 2 Disabled friendly washrooms
- 3 Provisions for Scribe & Human Assistance
- 4 Physical facilities (wheelchair)

#### Ramps Facility

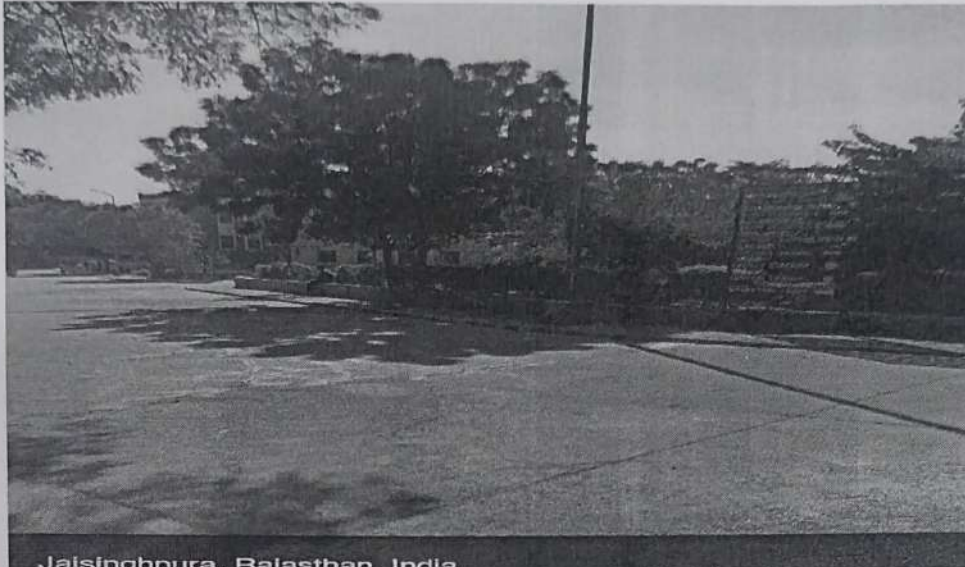
The ramps are built in every building of the university for continence and safety of disabled persons (Divyangjan) shown in figure



Ramps available at various locations for easy access of Divyangjan

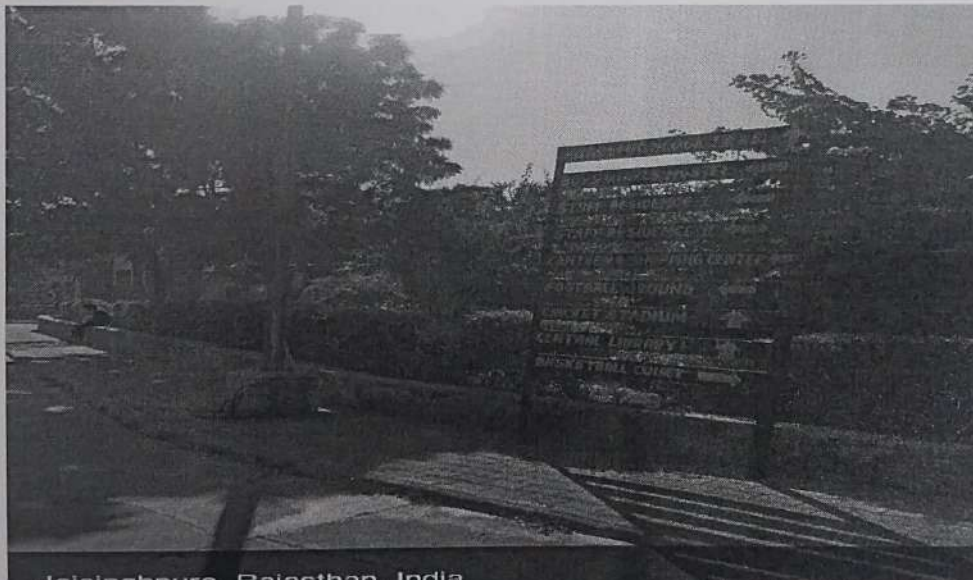
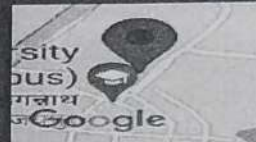
*Certified True Copy*  
Registrar  
Jagannath University  
Jaipur

Signage including tactile path, lights, display boards and signposts



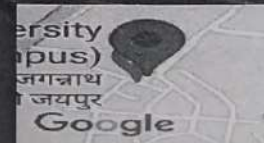
Jaisinghpura, Rajasthan, India

GXX3+XP, Jagannath University, Jaisinghpura,  
Rajasthan 303901, India  
Lat 26.5505226 / Long 75.9540425  
Saturday 14 December 2024 11:19:47



Jaisinghpura, Rajasthan, India

GXX3+XP, Jagannath University, Jaisinghpura,  
Rajasthan 303901, India  
Lat 26.5498915 / Long 75.9537628  
Saturday 14 December 2024 11:20:02



*Certified True Copy*  
*Registrar*  
*Jagan Nath University*  
*Jaipur*

### Disabled friendly washrooms

Separate disabled friendly washrooms are available in the campus with scheduled maintenance, cleanliness and hygiene. Figure below shows the disabled friendly washroom.



**Dedicated Rest Rooms for Divyangjan (Disabled Friendly Washrooms)**

*Certified True Copy*  
Registrar  
Jagannath University  
Jaipur

**Physical facility (wheelchair)**

There is an availability of wheelchair for the disabled person and one assistant is also available for the movement of disabled person from one place to another as per their requirement. The physical facility has been shown in the figure



Wheelchair

*Certified True Copy*  
*Registrar*  
*Jagan Nath University*  
*Jaipur*